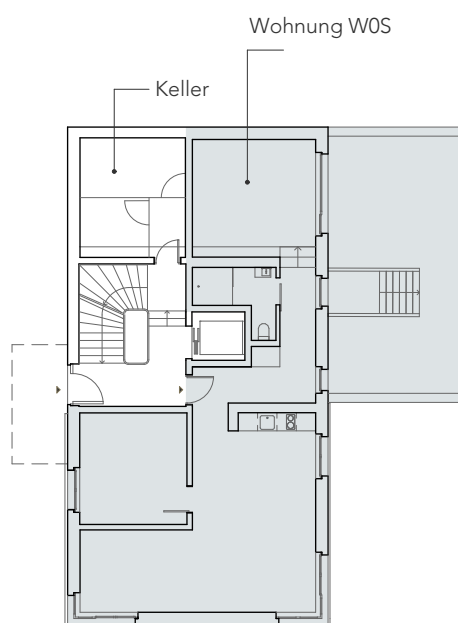
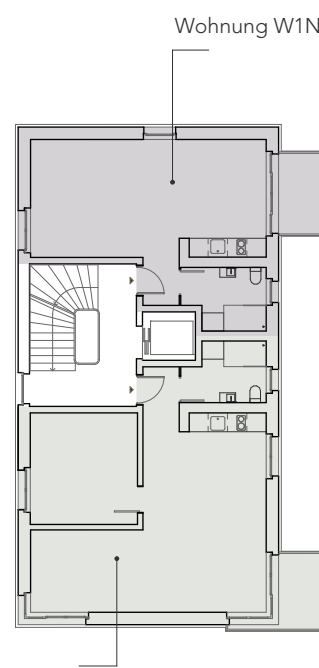


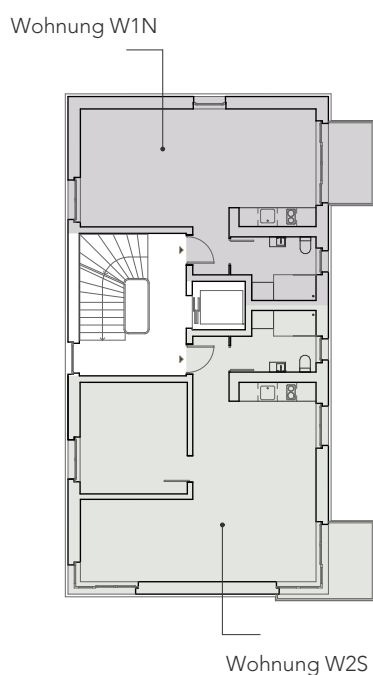
Untergeschoss



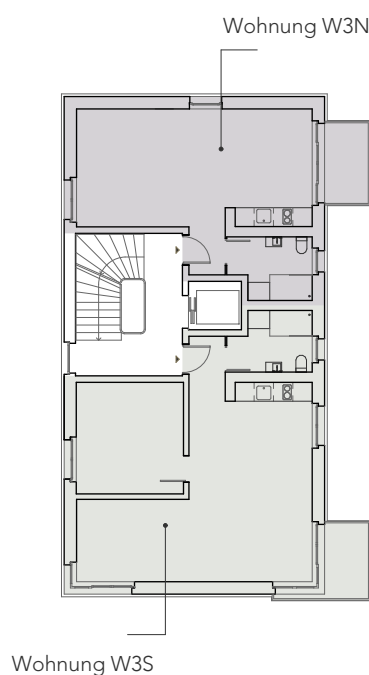
Erdgeschoss



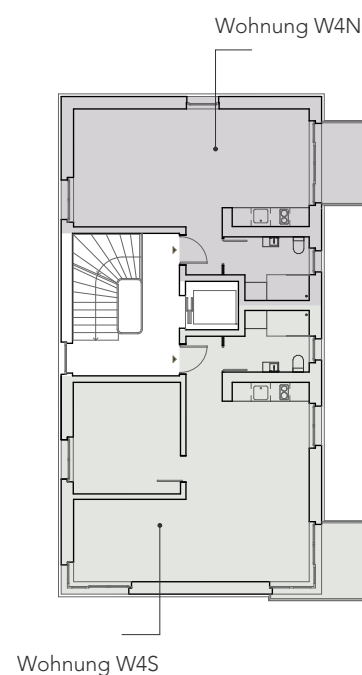
1. Obergeschoss



2. Obergeschoss



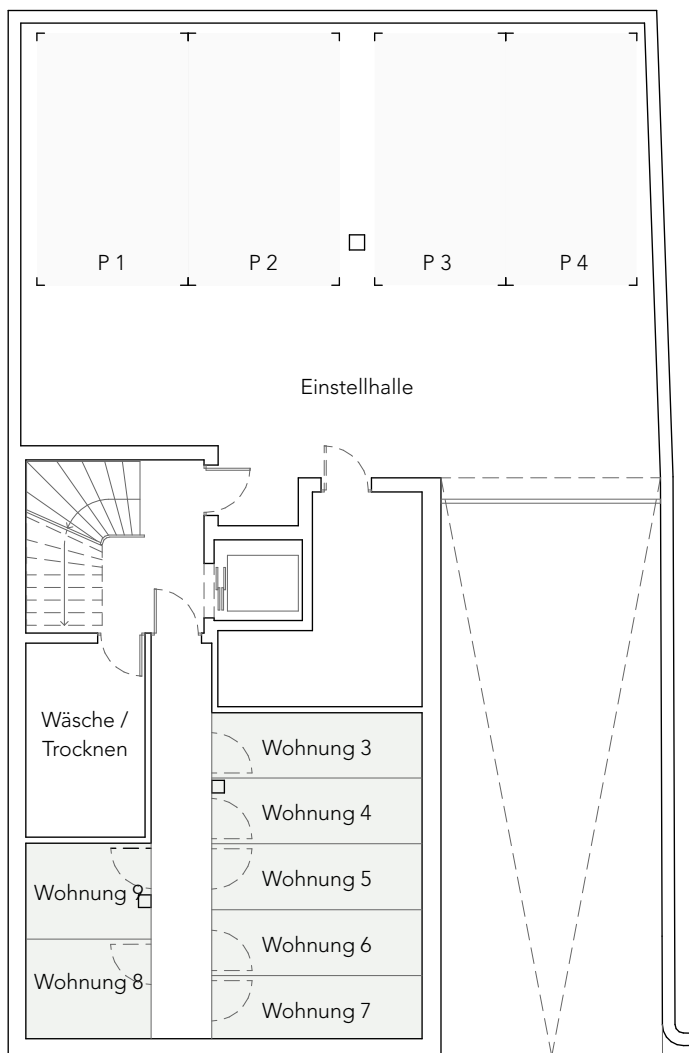
3. Obergeschoss



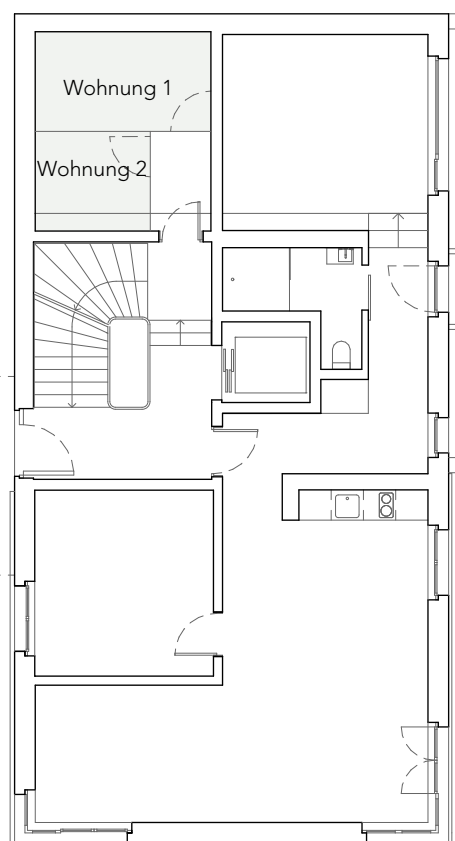
4. Obergeschoss



Einstellhalle und Keller



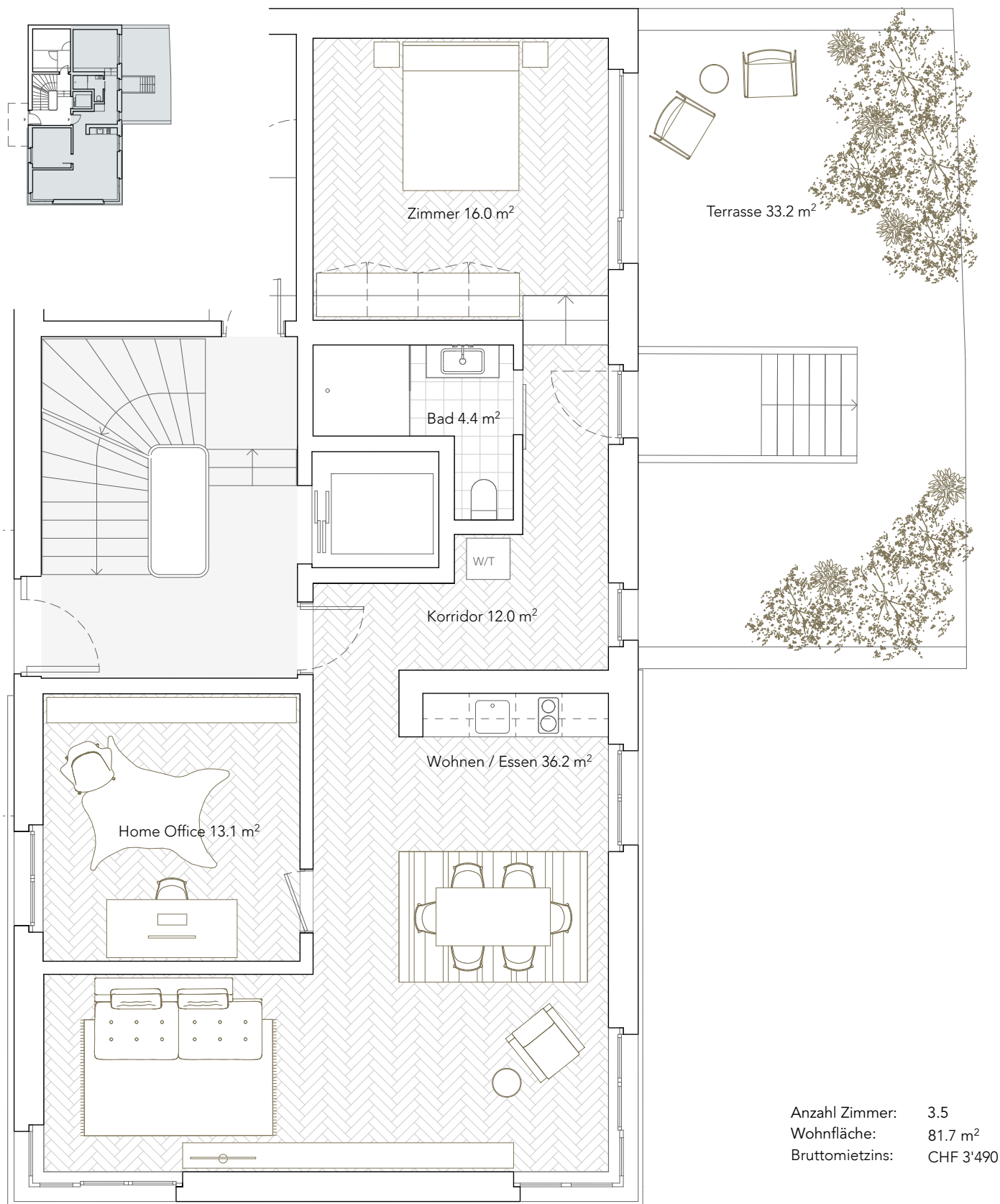
Untergeschoss



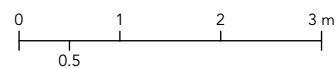
Erdgeschoss



Wohnung W05 Erdgeschoss

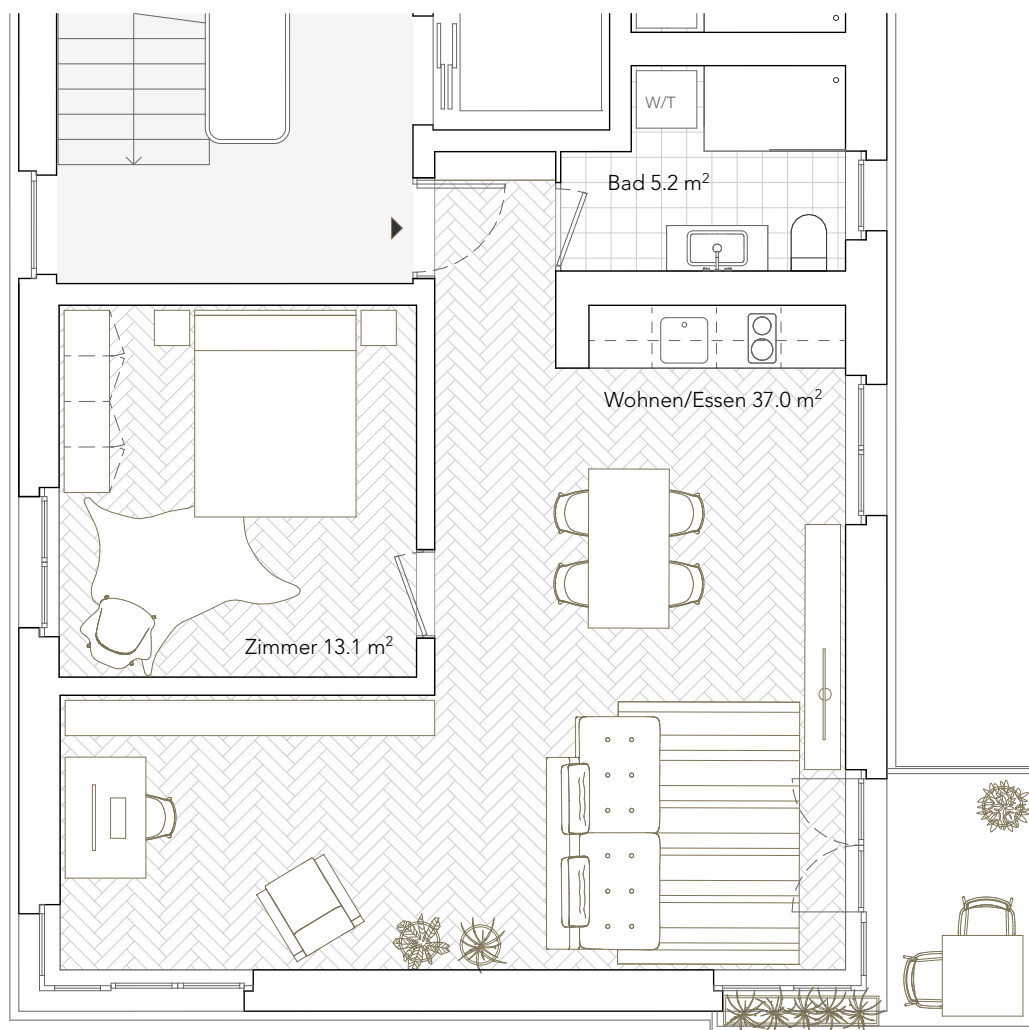
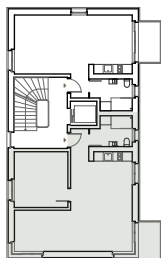


Anzahl Zimmer: 3.5
 Wohnfläche: 81.7 m²
 Bruttomietzins: CHF 3'490

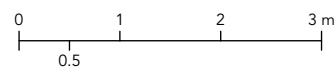


Wohnung W15

1. Obergeschoss

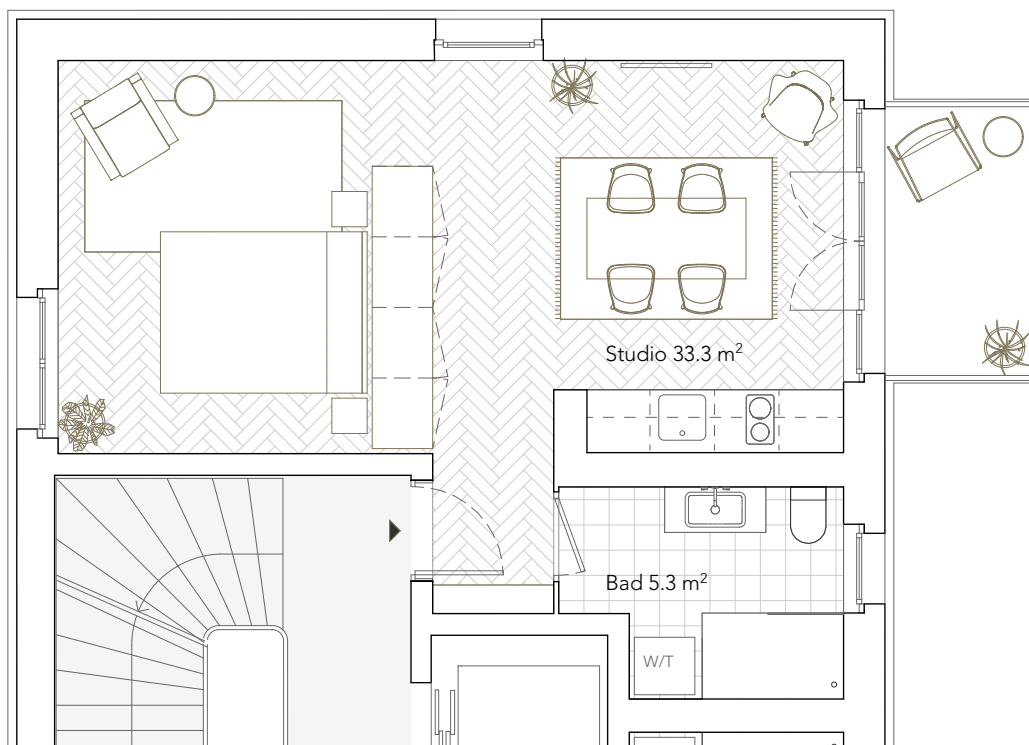
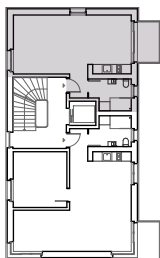


Anzahl Zimmer: 2.5
 Wohnfläche: 55.3 m²
 Bruttomietzins: CHF 2'420

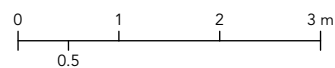


Wohnung W1N

1. Obergeschoss

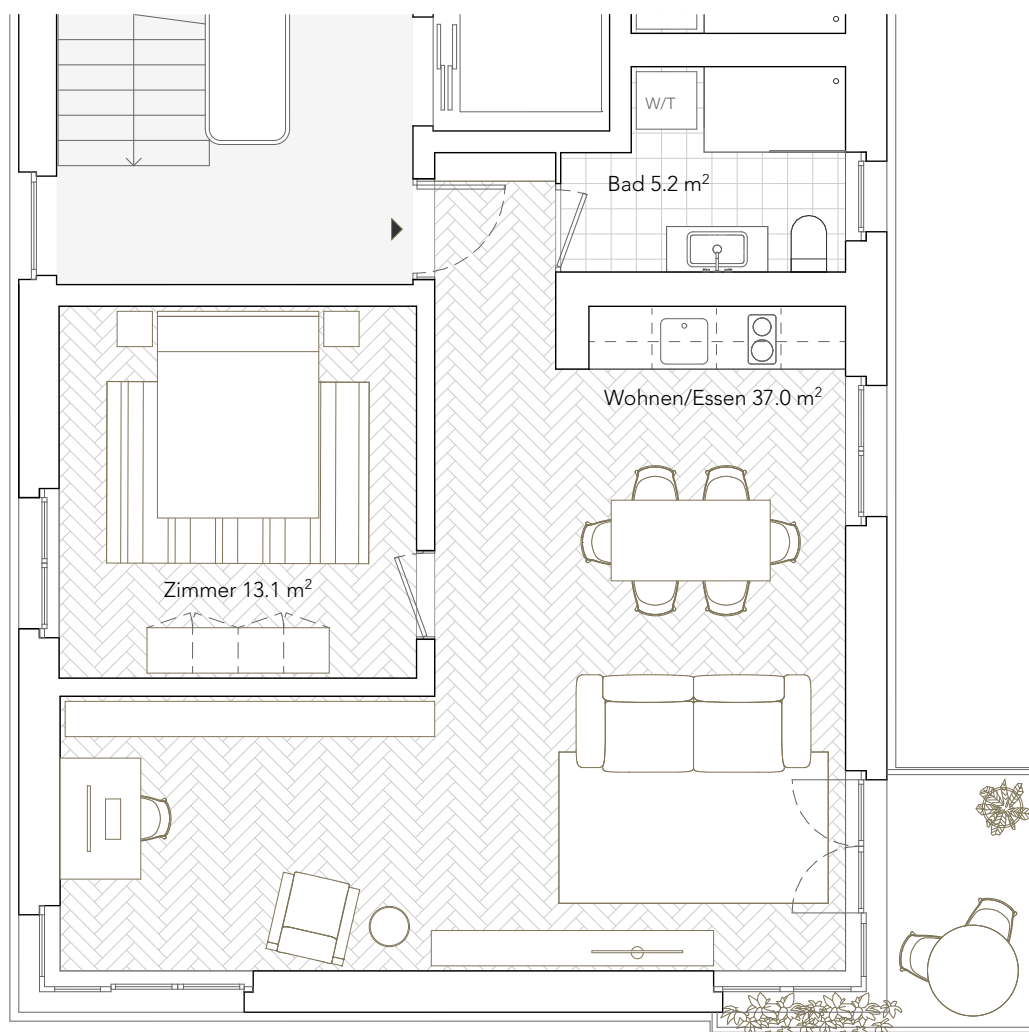
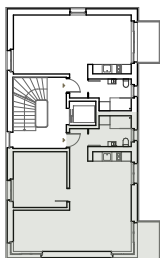


Anzahl Zimmer: 1.5
 Wohnfläche: 38,6 m²
 Bruttomietzins: CHF 1'480

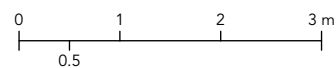


Wohnung W2S

2. Obergeschoss

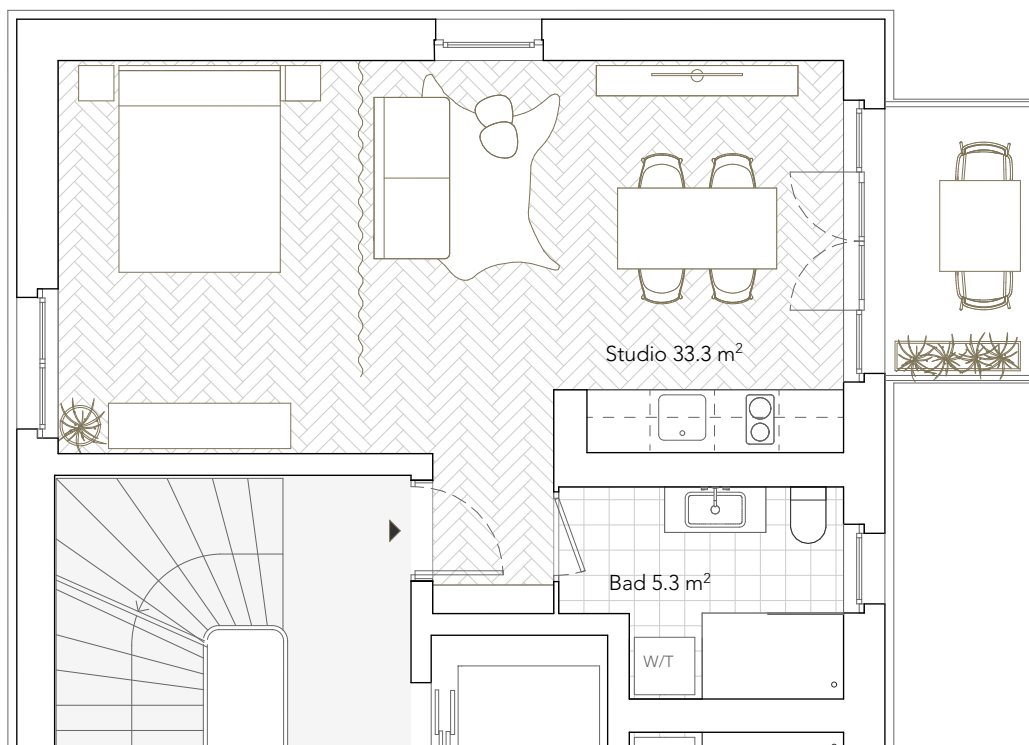
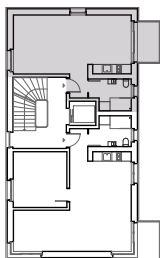


Anzahl Zimmer: 2.5
 Wohnfläche: 55.3 m²
 Bruttomietzins: CHF 2'480

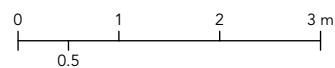


Wohnung W2N

2. Obergeschoss

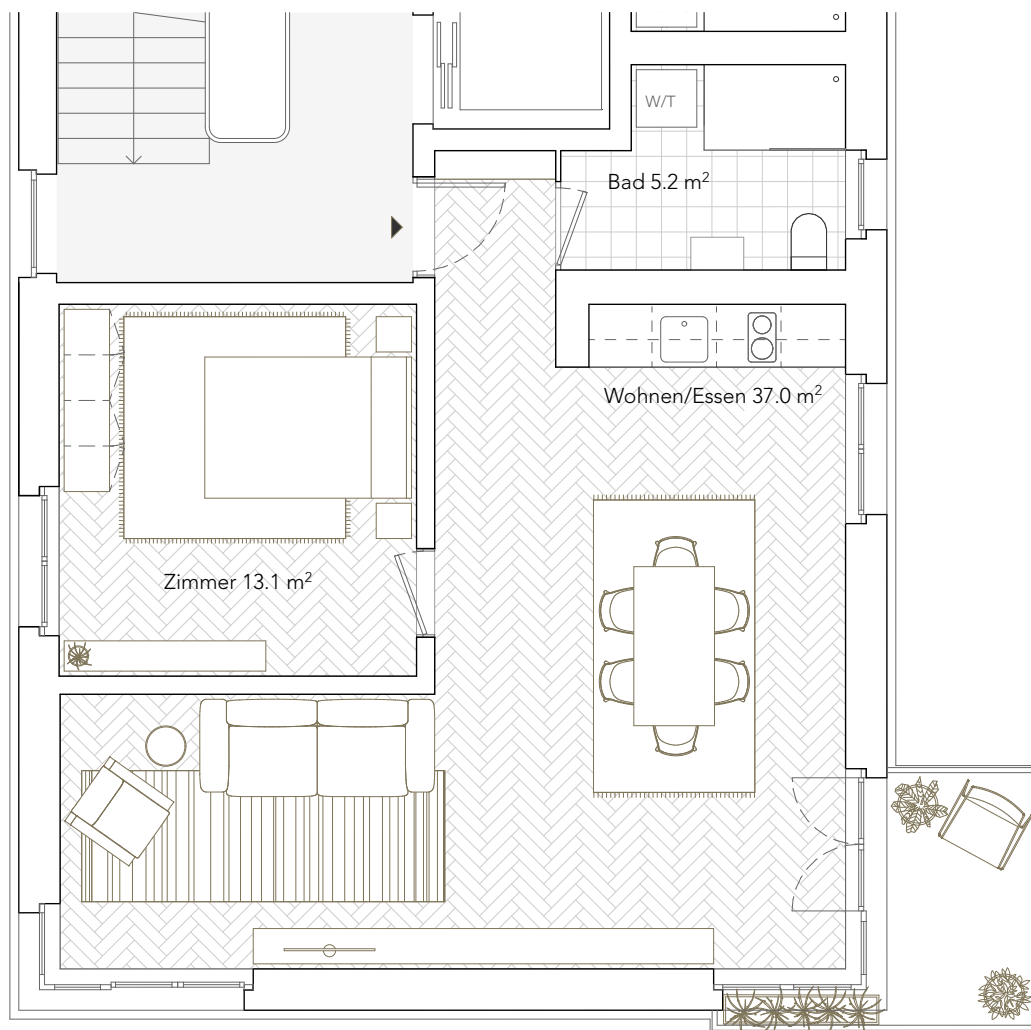
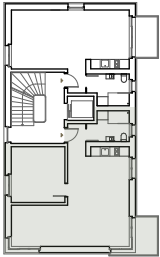


Anzahl Zimmer: 1.5
 Wohnfläche: 38,6 m²
 Bruttomietzins: CHF 1'540

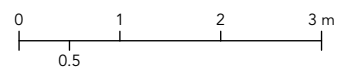


Wohnung W3S

3. Obergeschoss

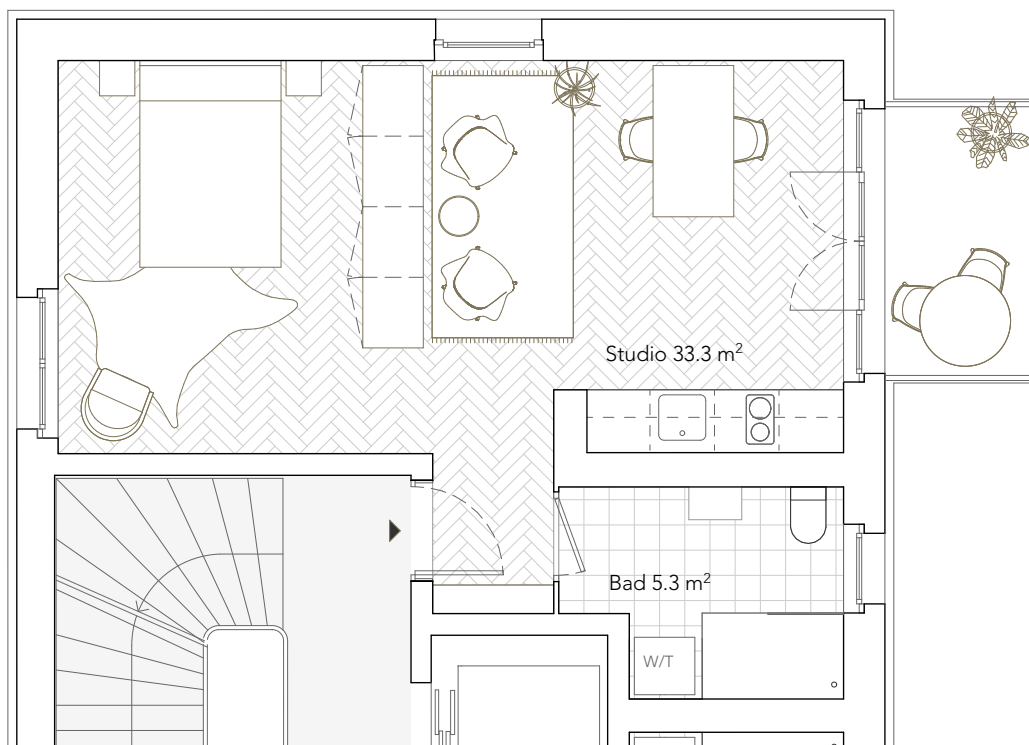
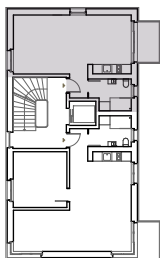


Anzahl Zimmer: 2.5
 Wohnfläche: 55.3 m²
 Bruttomietzins: CHF 2'560

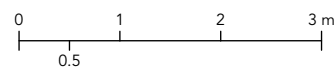


Wohnung W3N

3. Obergeschoss

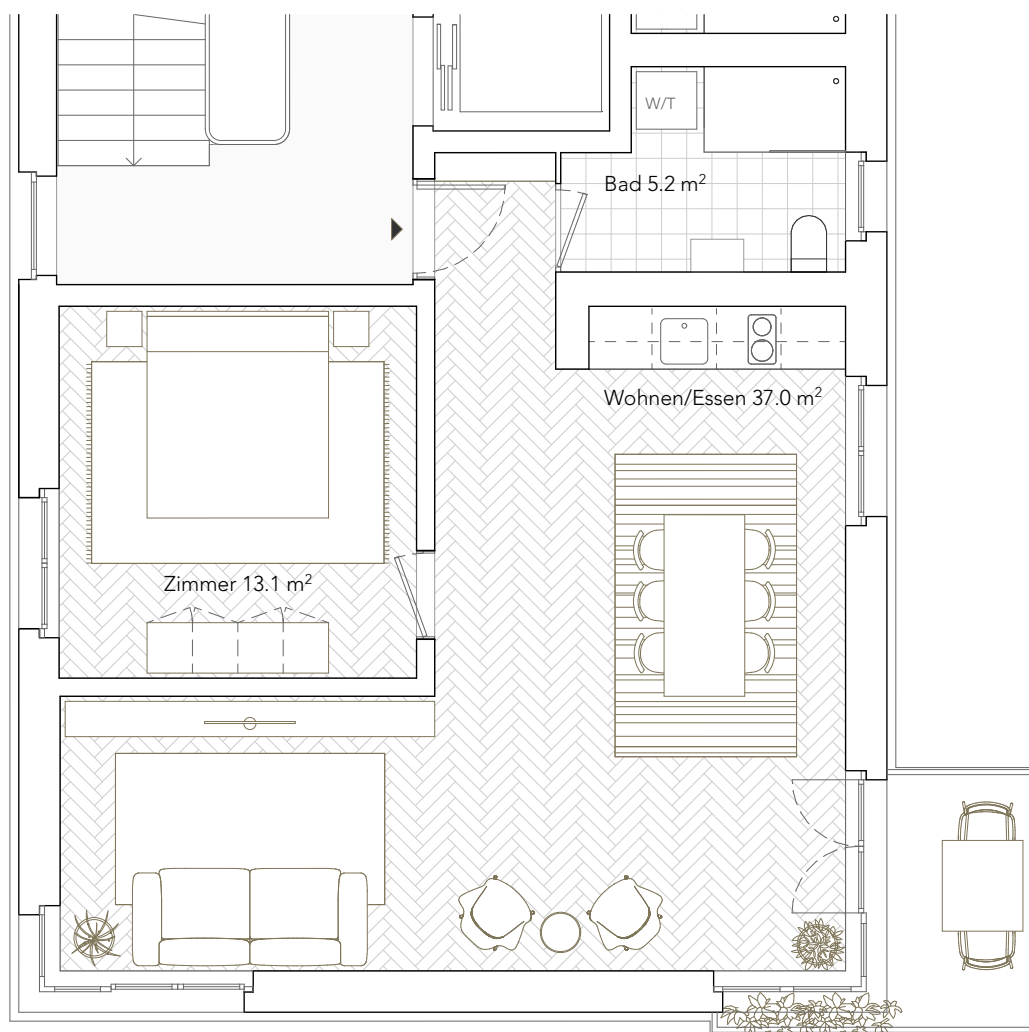
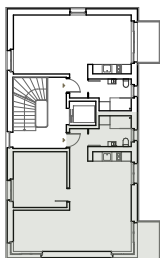


Anzahl Zimmer: 1.5
Wohnfläche: 38,6 m²
Bruttomietzins: CHF 1'590

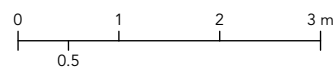


Wohnung W4S

4. Obergeschoss

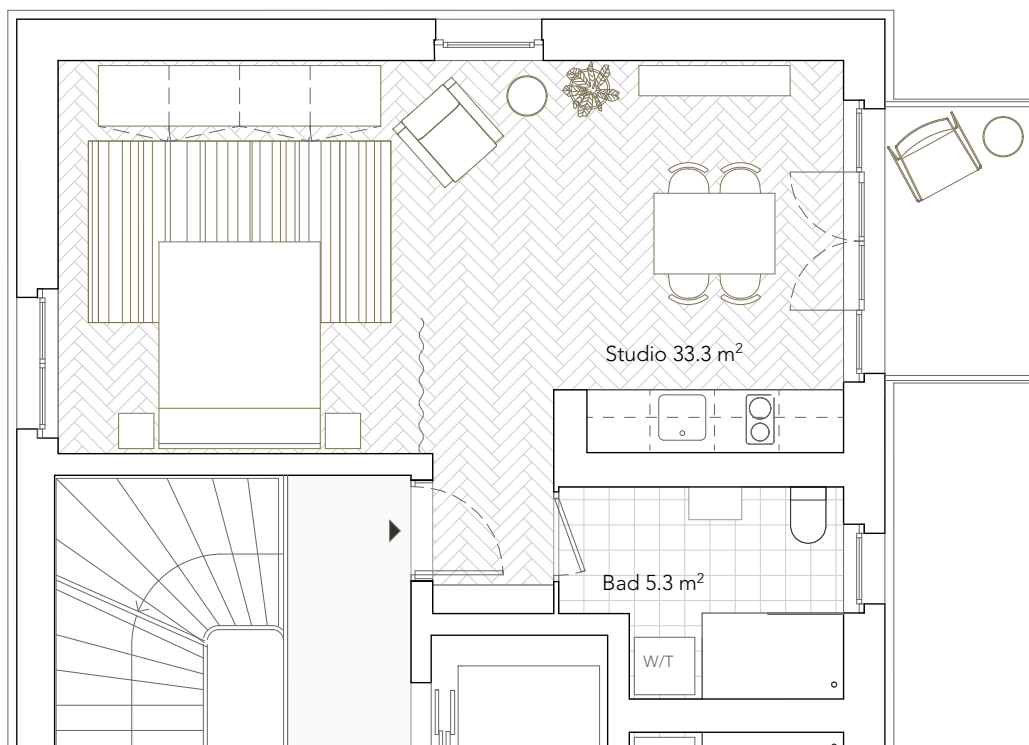
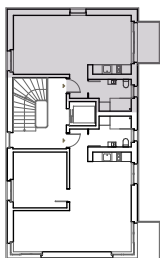


Anzahl Zimmer: 2.5
 Wohnfläche: 55.3 m²
 Bruttomietzins: CHF 2'690



Wohnung W4N

4. Obergeschoss



Anzahl Zimmer: 1.5
 Wohnfläche: 38,6 m²
 Bruttomietzins: CHF 1'690

